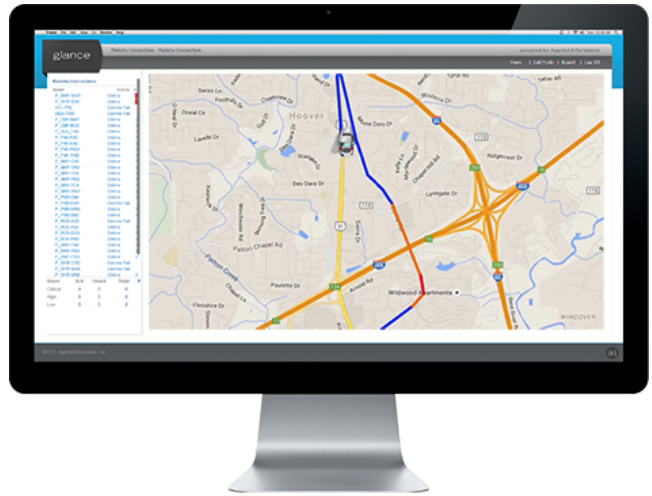


## Emergency Vehicle Preemption System

### Applied Information

The Glance™ Priority and Preemption suite of products makes it easier and safer for emergency vehicles to reach citizens in need by clearing the traffic ahead of them, giving them green lights at intersections, and bringing all other traffic safely to a halt.



### Description

In most American cities, emergency response times are only increasing as traffic gets worse. The Glance preemption system is an efficient and cost-effective way to take action.

By giving preemptive green lights to emergency responders, you can clear the traffic blocking their route and get emergency responders to their destination quickly and safely.

#### How It Works

1. Notify: The moment a route starts, the in-vehicle unit uses a cellular signal to alert Glance of the emergency call.
2. Preempt: Glance processes the route and communicates wirelessly with the traffic cabinet to clear traffic ahead of the vehicle's arrival.
3. Adapt: Glance monitors route progress in real time and dynamically adapts preemption requests as the situation changes.

### Specifications

#### Green to Scene

Vehicle crashes accounted for over 25% of firefighter fatalities in 2017. Proactively clearing traffic and bringing the rest of the intersection to a halt can help prevent these crashes.

#### Faster Response Times

Adaptive preemption and priority systems clear traffic ahead of a vehicle's arrival, which can reduce response times by as much as 20% .

#### Easy Install

The Glance system is easy to install and maintain. Hardware retrofits into existing cabinets and self-locates for quick set-up.

#### Next Generation Technology

Glance powers the system with a combination of cellular and GPS technology, making it more efficient than optical systems.

### **Improve Your ISO Rating**

Response times are a critical component of ISO ratings. With Glance, you can help improve your score to benefit citizens and fire departments alike.

---

**For more information: 1 800 363-5913**

Created on 09.08.2025 at 09:41:53 EDT